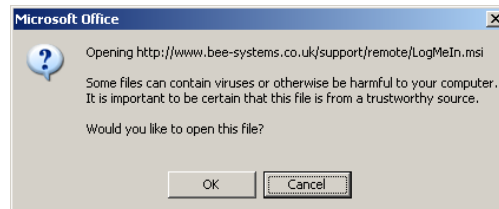


How to install Remote Access software for Bee Systems

- Go to the Remote Support section of our website:

<http://www.bee-systems.co.uk/support/remote>

- Click the "Download" button
- Click "OK"



- Click "Run"



(Please be patient, this can take several minutes to download)

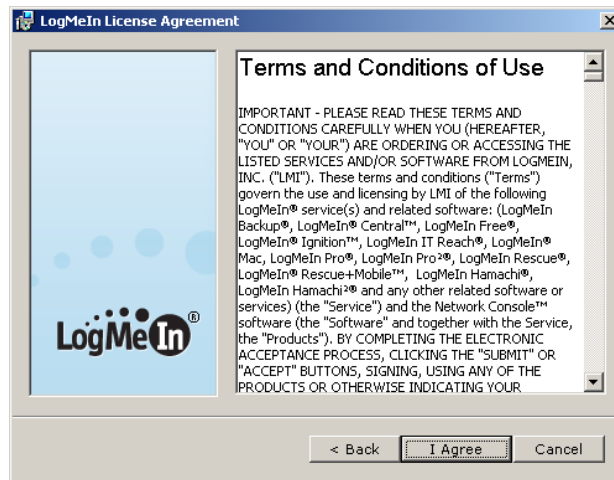
- Click "Run"



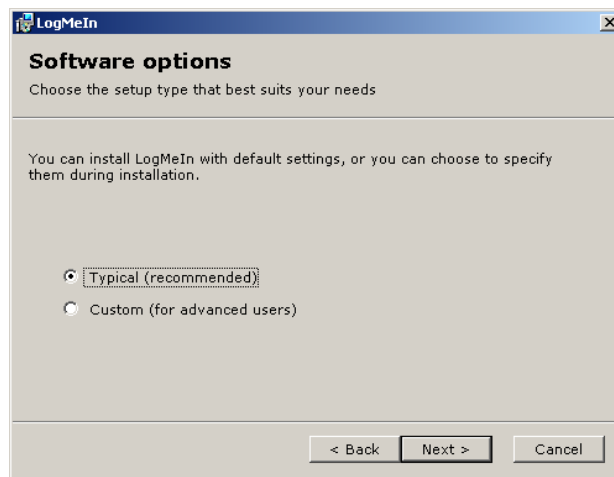
- Click "Next"



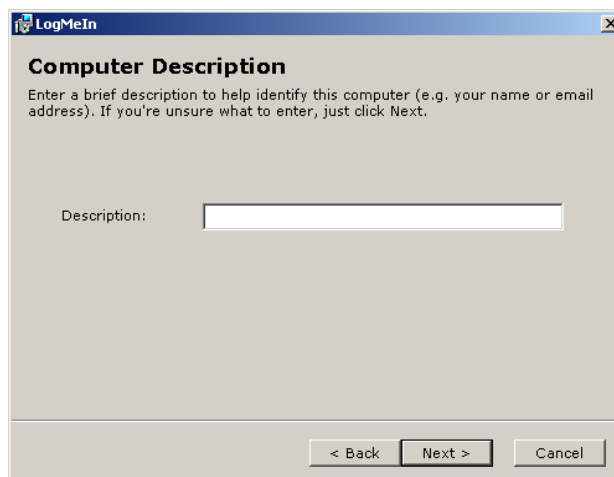
- Click "I Agree"



- Click "Next"



- In the description box, enter your full name & then click "Next"

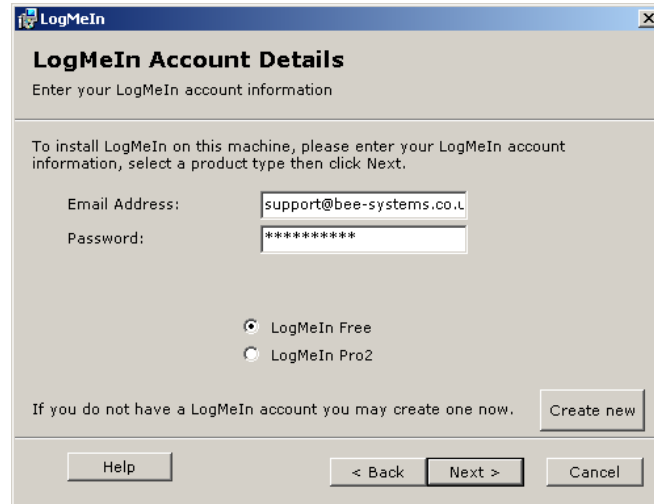


- Type the following details as shown below:

Email Address: support@bee-systems.co.uk

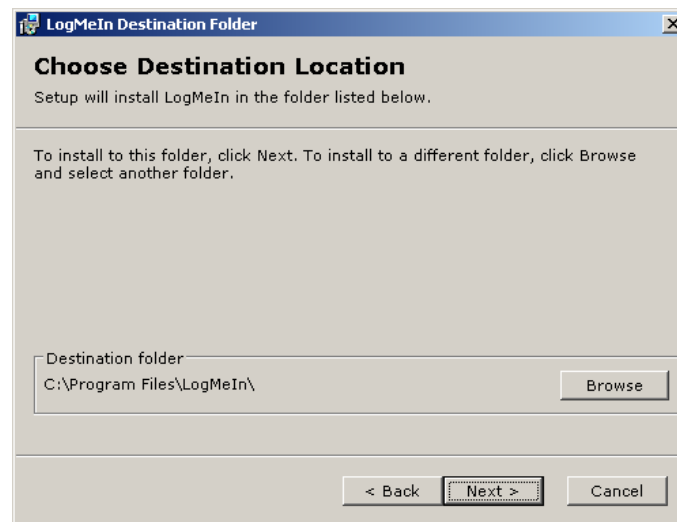
Password: {please call 0115 8713849 for password of the day}

Then highlight the "LogMeIn Free" radio button & click "Next"



The image shows a Windows dialog box titled "LogMeIn Account Details". The window has a blue title bar with the LogMeIn logo and a close button. The main content area is light gray and contains the following text: "Enter your LogMeIn account information". Below this, a paragraph reads: "To install LogMeIn on this machine, please enter your LogMeIn account information, select a product type then click Next." There are two input fields: "Email Address:" with the text "support@bee-systems.co.uk" and "Password:" with "*****". Below the fields are two radio buttons: "LogMeIn Free" (which is selected) and "LogMeIn Pro2". At the bottom left, there is a link: "If you do not have a LogMeIn account you may create one now." with a "Create new" button next to it. At the bottom of the dialog are four buttons: "Help", "< Back", "Next >", and "Cancel".

- Click "Next"



The image shows a Windows dialog box titled "LogMeIn Destination Folder". The window has a blue title bar with the LogMeIn logo and a close button. The main content area is light gray and contains the following text: "Setup will install LogMeIn in the folder listed below." Below this, a paragraph reads: "To install to this folder, click Next. To install to a different folder, click Browse and select another folder." There is a text box labeled "Destination folder" containing the path "C:\Program Files\LogMeIn\" and a "Browse" button to its right. At the bottom of the dialog are three buttons: "< Back", "Next >", and "Cancel".

- Click "Finish"



- Click "Don't show this welcome screen again" & then close the LogMeIn window

